

Standard Vehicle Specifications

NODWELL[®]
RN400

TRANSPORTER



Low Ground-Pressure Tracked Carriers



PRELIMINARY SPECIFICATIONS

General:

| | |
|--------------------------|-----------------|
| Ground Pressure @ | |
| 1.5" penetration - | |
| Unloaded | 1.8 P.S.I. |
| Loaded | 3.25 P.S.I. |
| Track Area | 28,000 sq. ins. |
| Minimum Turning Radius | 25 feet |
| Ground Clearance, Loaded | 16" |
| Fording Depth | 48" |
| Gradeability | 60% |
| Angle of Approach | 40° |
| Angle of Departure | 85° |

Maximum Speeds @ 2500 R.P.M.

| | |
|----------------|----------|
| 1st gear | 2.04 MPH |
| 2nd gear | 4.38 |
| 3rd gear | 7.78 |
| 4th gear | 10.80 |
| Reverse (low) | 1.79 |
| Reverse (high) | 2.50 |

Weights:

| | |
|----------------|-------------|
| Unloaded (net) | 50,000 lbs. |
| Payload (tare) | 40,000 lbs. |
| Loaded (gross) | 90,000 lbs. |

Dimensions:

| | |
|-----------------------|-------|
| Length | 45'4" |
| Width, over tracks | 123" |
| Width, tracks removed | 108" |
| Height | 125½" |
| Deck height, unloaded | 66" |
| Deck length | 30' |
| Deck width | 9' |

Engine Characteristics (2 engines)

| | |
|-------------------------------------|-------------------|
| Manufacturer | G.M. |
| Model | 4-53 |
| Type | 4 valve - 2 cycle |
| Fuel | Diesel |
| Max. B.H.P. | 130 @ 2800 RPM |
| Max. Torque (net) | 254 @ 1200 RPM |
| Number of Cylinders | 3 1/2 |
| Bore and Stroke | 2.23 cu. in. |
| Displacement | Forced Feed |
| Lubrication System | 40 P.S.I. |
| Oil Pressure | 170° |
| Operating Temperature (recommended) | 1,000 RPM |
| Recommended Idling Speed | Variable Speed |
| Governor | |

Fuel System: Injection pump with governors

| | |
|------------------|------------|
| Injectors - Type | S-45 |
| Size | 45 cu. mm. |

Road Wheels:

| | |
|------------------------|----------------------|
| Type | Pneumatic (Michelin) |
| Tire Size | 7.50 x 20" |
| Ply Rating | 10 |
| Type of tread | Highway |
| Wheels | HD 10 Stud |
| Spindle & Hub Assembly | #30 Timken Brgs. |

TRACKS

| | |
|---------|---------------------------|
| Width | 48" |
| Grouser | Forged Springs steel HT |
| Bolts | 5/8" SAE with locking nut |
| Belts | Nodwell 5 ply 18" |
| Splice | Overlap type |

Fifth Wheel:

| | |
|------|------------------|
| Size | 34" Heavy Duty |
| Type | Side Oscillating |

Capacities (Imperial Measure):

| | |
|-----------------------|-----------|
| (Total for Machine) | |
| Fuel Tank (2) | 140 gals. |
| Crankcase (2) | 22 quarts |
| Cooling System (2) | 32 quarts |
| Transmission (2) | 40 quarts |
| Differential (2) | 28 quarts |
| Outer Planetaries (4) | 12 quarts |
| Air Cleaner (2) | 1 quart |

Winch:

| | |
|----------|---------------------------|
| Make | Braden MS-20 |
| Position | Deck Mounted |
| Capacity | 45,000 lbs. c/w 3/4" line |

Hydraulic Pump:

| | |
|------------------------------|-----------|
| Make | Vickers |
| Type | V 200 |
| Rated Capacity @ 1500 P.S.I. | 11 G.P.M. |

Frame:

Mainframe of T1 steel

Electrical System:

| | |
|-----------------------|---------------|
| Battery, Number used | 2 |
| Voltage | 12 V |
| Type | Wet |
| Capacity | 200 Amp. Hrs. |
| Ground Terminal | Negative |
| Alternator (1) - Make | Delco-Remy |
| Model | 60 amp. |
| Voltage | 12 |
| Starting Motor - Make | Delco Remy |
| Voltage | 12 |
| Regulator - Make | Delco Remy |
| Voltage | 12 |
| Capacity | 60 amp. |

Power Train:

| | |
|--------------------------|--------------------|
| Transmission - Make | Allison |
| Number required | 2 |
| Model | CT-3340 |
| Type | 4 speed semi auto. |
| Gear Ratios | |
| 1st gear | 3.81 |
| 2nd gear | 1.94 |
| 3rd gear | 1.00 |
| 4th gear | 0.72 |
| Reverse (low) | 4.35 |
| Reverse (high) | 3.12 |
| Torque Converter - Make | Allison |
| Model | TC 420 |
| Stall Torque Ratio | 2.88 to 1 |
| Differential - Make | Timken |
| Model | PR - 101 |
| Number required | 2 |
| Outer Planetaries - Make | Timken |
| Model | PR - 101 |
| Reduction (final) | 3.6 to 1 |
| Number required | 4 |

Steering:

| | |
|------------------|---------------|
| Type | Hydraulic |
| Cylinders - Size | 5 inch |
| Type | Single acting |
| Number required | 2 |

Brakes:

| | |
|----------------|---------------|
| Driving - Type | Drive line |
| Make | Tru-Stop Disc |
| Parking - Type | Drive line |
| Make | Allison Drum |

Suspension and Running Gear:

| | |
|----------------|--------------------------------------|
| Type | Crank Arm with torsion coil spring |
| Drive Sprocket | Urethane (dble) 14" tooth - 5" pitch |

Cab:

| | |
|------------|--------------------|
| Size | 2-man |
| Lining | 1/4" Birch Plywood |
| Insulation | Rockwool |
| Seats (2) | Bostrum |

Controls:

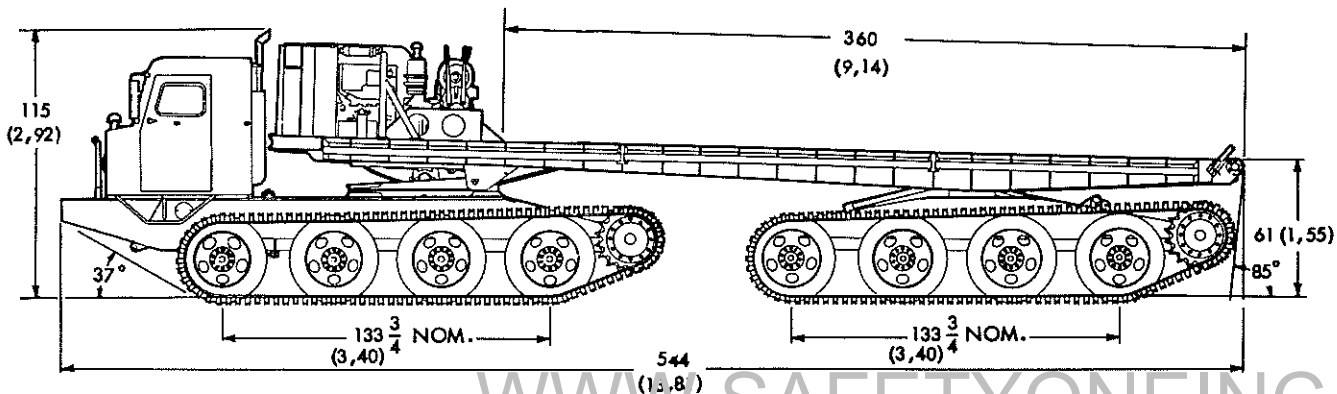
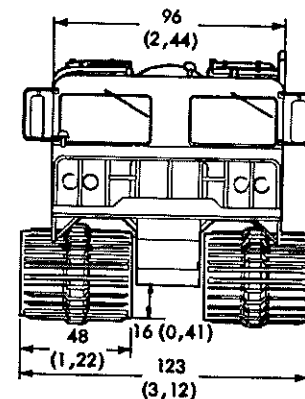
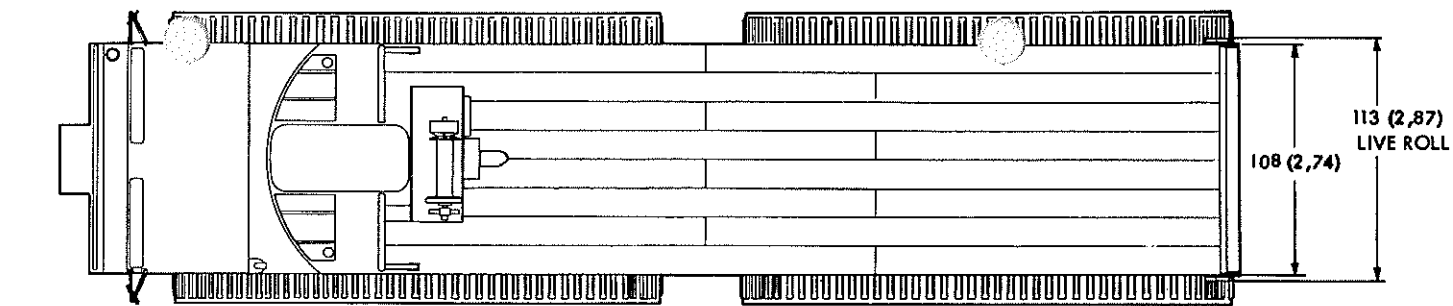
| | |
|-----------------|----------------|
| Make | Hydronic |
| Type | Remote Control |
| Number required | 5 |
| Purpose: | |
| Steering | 1 |
| Throttles | 2 |
| Gear Shift | 2 |

Instruments:

| | |
|-------------------------------------|----------------|
| Hour Meter (2) | Direct Reading |
| Tachometer (2) | Electric |
| Oil Pressure (2) | |
| Water Temperature (2) | |
| Transmission Temp Warning Light (2) | |
| Ammeter (1) | |

Miscellaneous:

| | |
|----------------------------|---|
| Grill Guard | Full Width |
| Live Roll | 8" diameter full width with roller bearings |
| Spare Wheel & Tire | Mounted |
| Pintle Hook | Swivel type, extra HD |
| Rear View Mirror | West Coast (2) |
| Deck Spot Light | Sealed beam, mtd. to face rear deck |
| Cab Heater | Water type (2) |
| Radiator Shutters | 2 |
| Starting Fluid Applicators | 2 |
| Engine Mufflers | 2 |
| Windshield Defrosting Fans | 2 |
| Floor Deck | Dbl. - Sub Floor 1 1/4" Hardwood , |
| | Work Floor 3/4" Pine |
| Track Mounting Tool | 1 |

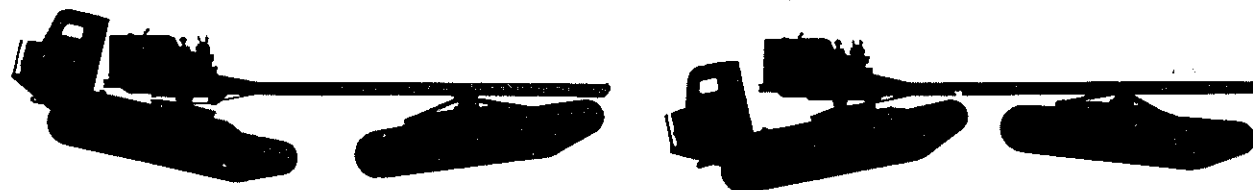


Dimensions in parentheses () are in meters; all other dimensions are in inches.

WWW.SAFETYONEINC.COM

POWER TRAIN. Power is supplied by two diesel engines through two Allison semi-automatic transmissions to the planetary drive rear axles. Tachometers are used by the operator for synchronization of front and rear engines.

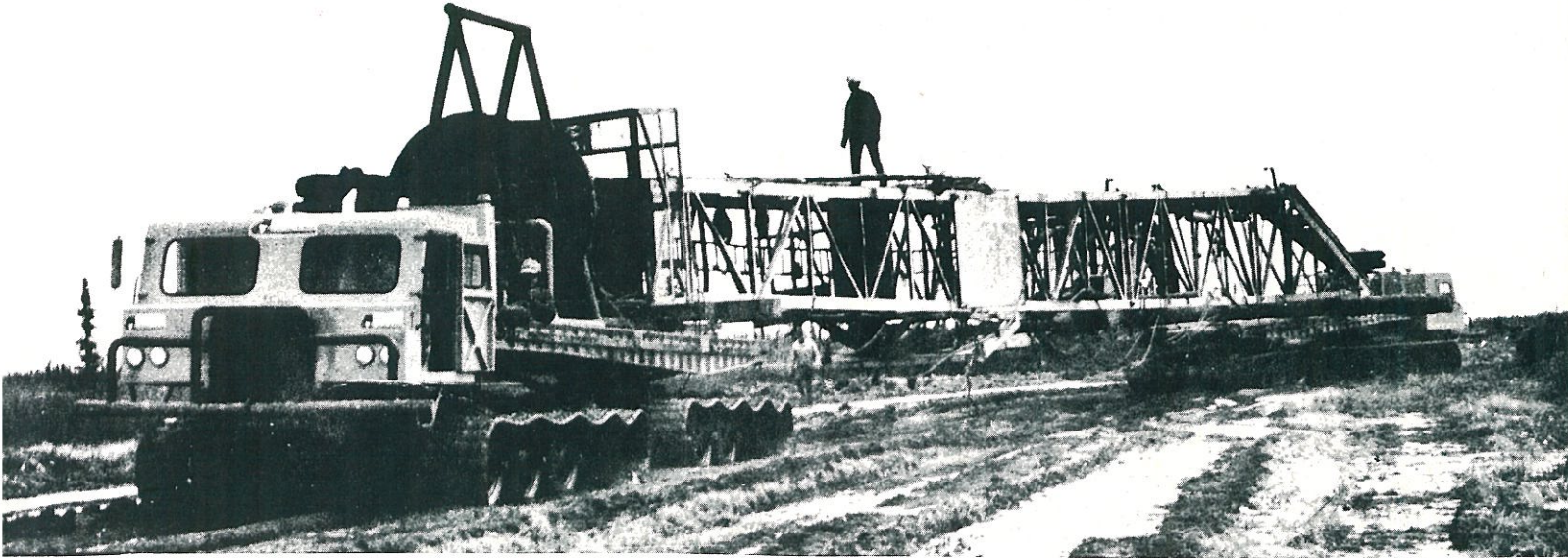
FRONT AND REAR TRACK UNITS can each assume any transverse and/or lateral angle, depending upon the dictates of the terrain.



Track Units assume any angle dictated by terrain



"MOVE IT!"



WWW.SAFETYONEINC.COM
ANYWHERE, ANYTIME... EVEN THROUGH THE MUSKEG

WITH A NODWELL TRANSPORTER!

Shown here is the complete mast of a rig being moved through the Rainbow muskeg by matched Nodwell Transporters.

Contact Nodwell for information on the new huge four tracked transporter, the RN400, that carries the heaviest rig component with ease.

THE NODWELL FAMILY



ROBIN-NODWELL MFG. LTD.
P.O. Box 1450,
Calgary, Alberta.

Dealer

1917