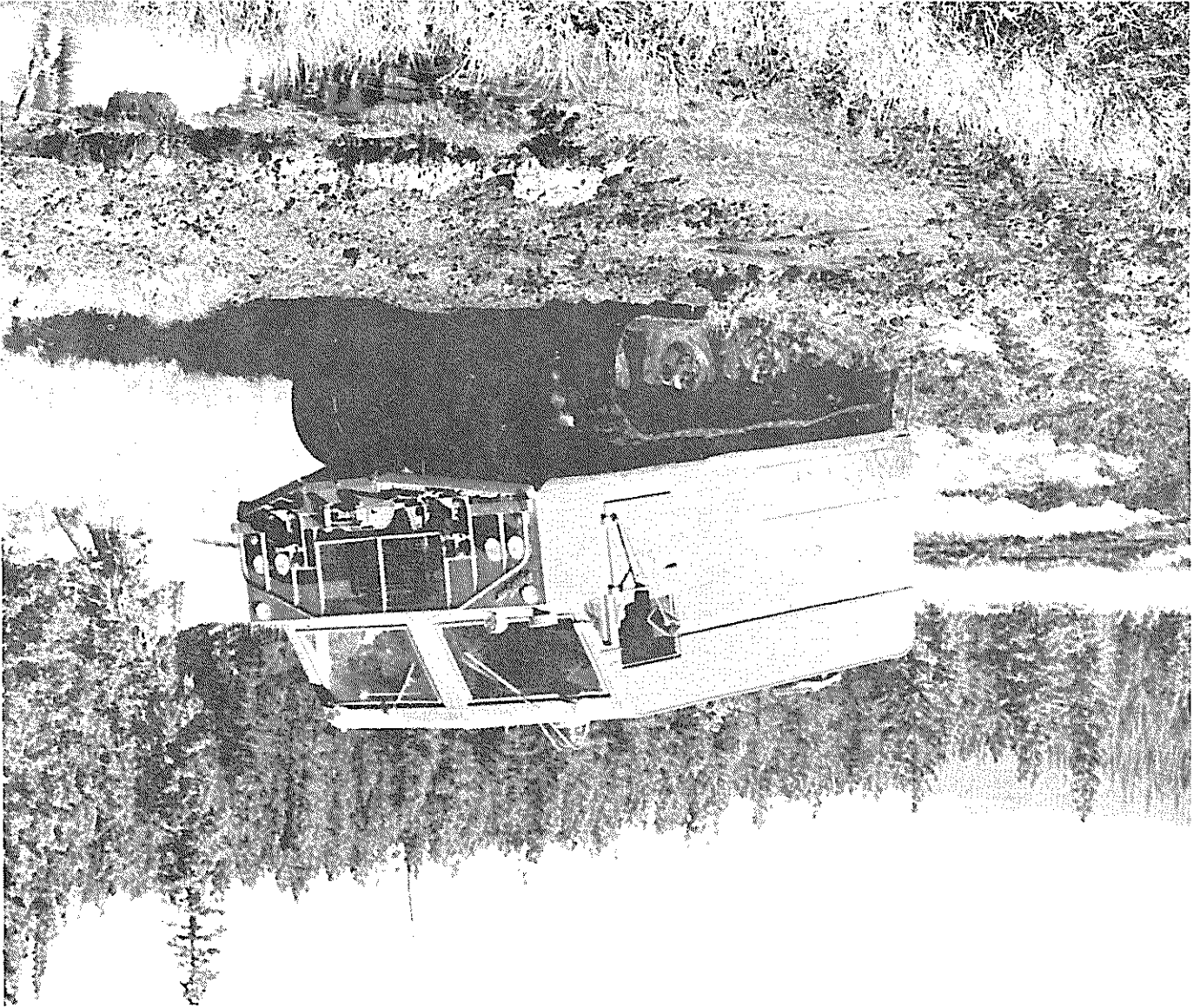


STANDARD VEHICLE SPECIFICATIONS & OPTIONS



LOW GROUND-PRESSURE TRACKED CARRIERS

RN - 75

**NODWELL**

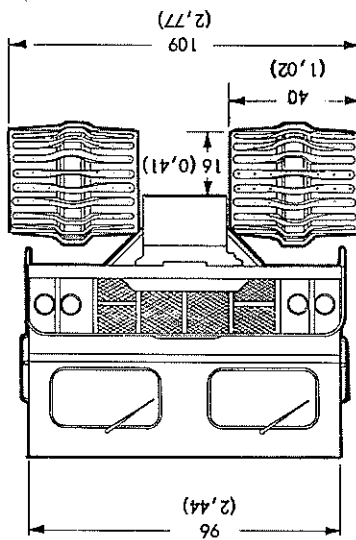
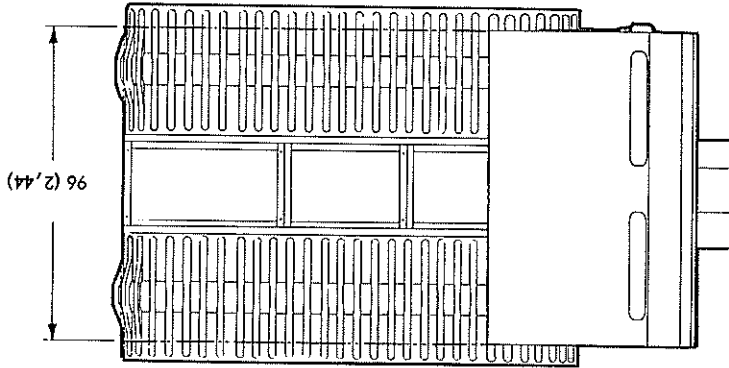
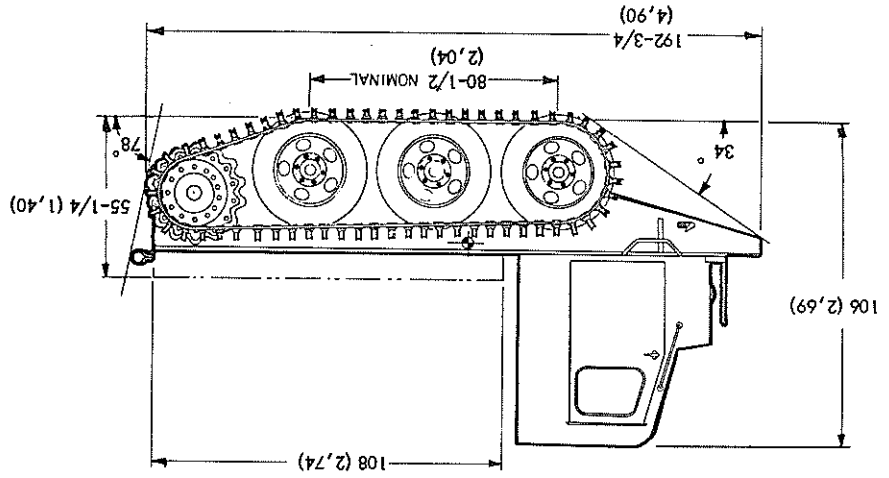
MODEL RN75 NODWELL TRACKED CARRIER

STANDARD VEHICLES

	SERIES I (905-9-0001)	SERIES II (905-9-0002)
Weight	9,930 lbs.	10,750 lbs.
Load	7,500 lbs.	7,500 lbs.
Gross	17,430 lbs.	18,250 lbs.
Track Area	7,520 sq. ins. @ zero penetration	7,520 sq. ins. @ zero penetration
Ground Pressure, Unloaded	1.28 PSI @ zero	1.28 PSI @ zero
Ground Pressure, Loaded	2.29 PSI @ zero	2.29 PSI @ zero
Ground Pressure, Loaded	1.76 PSI @ 10" penetration	1.76 PSI @ 10" penetration
Width	109-1/16"	109-1/16"
Width (Tracks Removed)	101-1/2"	101-1/2"
Length	16'3/4"	16'3/4"
Height	105-7/8"	105-7/8"
Speed	14.6 MPH	12.6 m.p.h.
Turning Radius (Inside)	103"	103"
Fording Depth	36"	36"
Ground Clearance, Loaded	16"	16"
Cruising Range, Loaded	80 miles (40 Imp. gals @ 4-6 gals./hour)	80 miles (40 Imp. gals @ 4-6 gals./hour)
Gradability (Max.)	Forward - 60% Side - 30%	Forward - 60% Side - 30%
Engine	Ford 240 Gas - 6 cyl.	GMC 4-53
Top Speed Governor	Vacuum @ 2800	2500 RPM
Transmission	New Process #435, 4 Fwd. - 1 Rev.	Fuller 5A430, 5 Fwd. - 1 Rev.
Differential	Nodwell #15 Planetary	Nodwell #15 Planetary
Planetaries (Outer)	Timken - 3.6 to 1 reduction	Timken - 3.6 to 1 reduction
Steering	Nodwell - hyd. actuated	Nodwell - hyd. actuated
Brakes, Drive Line	Tru-Stop Disc - 12"	Tru-Stop Disc - 14"
Drive Sprocket	Rubber - 14 tooth	Rubber - 14 tooth
Suspension	Crank Arm with 6000 lb. coil spring	Crank Arm with 6000 lb. coil spring
Spindle & Hub Assembly	#11 Timken bearings	#11 Timken bearings
Wheels	6 stud	6 stud
Tires	7.50 x 20 - 12 P.R.	7.50 x 20 - 12 P.R.
Tracks - Width	40"	40"
- Grouser	Forged Spring Steel, Heat treated	Forged Spring Steel, Heat treated
- Belts	Nodwell - 4 ply	Nodwell - 4 ply
Track Adjuster	Hydraulic, grease actuated	Hydraulic, grease actuated
Electrical System	12 V 70 Amp Battery, 45 Amp Alt.	12 V 200 Amp Battery, 45 Amp Alt.
Cab	2-3 man, not insulated	2-3 man, not insulated
Grill Guard	Full width	Full width
Pinle Hook	Swivel Type, H.D.	Swivel Type, H.D.
Tools	Wheel & Steering Adj. wrenches	Wheel & Steering Adj. wrenches
Colour	Yellow	Yellow

Any deviation from The Standard Series of Vehicles and Regular Options are first subject to engineering approval and delivery can be expected to be longer than normal.

Dimensions in parentheses ( ) are in meters;  
all other dimensions are in inches.

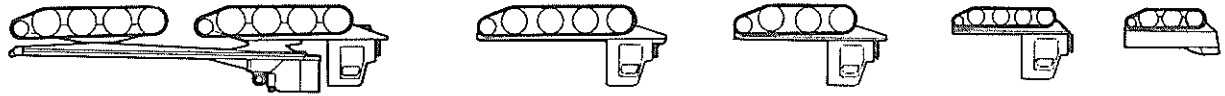


**NODWELL®** - Marca Registrada, Registered Trademark, Marque Deposee.

P.O. Box 1450  
CALGARY, ALBERTA, CANADA

**ROBIN-NODWELL INC.**

**ROBIN-NODWELL MFG. LTD.**



**THE NODWELL FAMILY**

With a forward gradeability of 60% and a side gradeability of 30%  
The Nodwell Low Ground Pressure Vehicles are  
engineered for all types of Off Highway conditions and readily  
adapted to meet most operational requirements.

