

**MUSKEG<sup>®</sup> CARRIER**



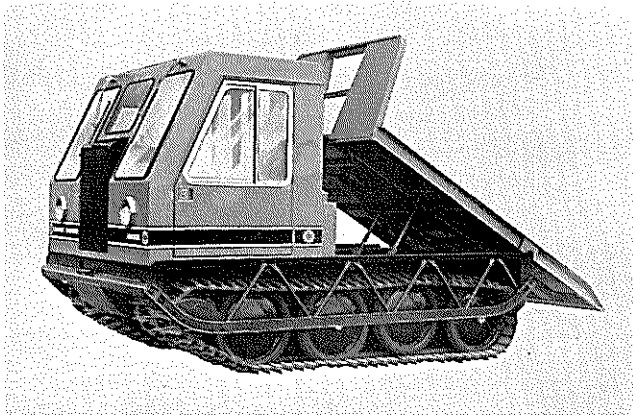
With its combination of power, traction, stability, and flotation, the versatile Muskeg<sup>®</sup> Carrier from Bombardier transports men, materials and equipment over difficult terrain, where most other vehicles fear to tread.

The Carrier's rear deck packs payload of up to 8,000 lbs. and is used to mount a broad range of equipment such as winches, augers, backhoes and aerial buckets. Pumps, compressors and tanks can also be fitted to give all the carrying and mounting capacity of a four-ton truck.

Yet the Muskeg Carrier is designed to cope with most types of difficult terrain. Two 28" tracks spread the vehicle's weight to maximize flotation. A water-tight frame gives the Carrier a fording depth of 30". And its toboggan-type belly pan allows it to slide over hidden obstacles preventing chances to hang up.

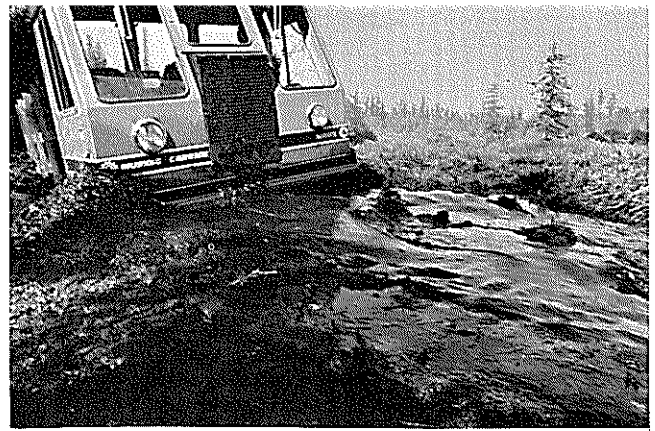
Other design features include a choice of gas or diesel engines. A flexible suspension system keeps the tracks in continuous contact with the ground. Bombardier rubber-belted tracks are reinforced with steel cables to give greater strength and longer life.

The well proven Muskeg Carrier is used extensively in difficult terrain operations such as oil explorations, forestry operations and maintenance of public utility and rights-of-way installations. It is also used by a wide range of government agencies. Yet the Muskeg Carrier is one of the most compact, versatile, heavy-duty multi-terrain vehicle you'll find anywhere.

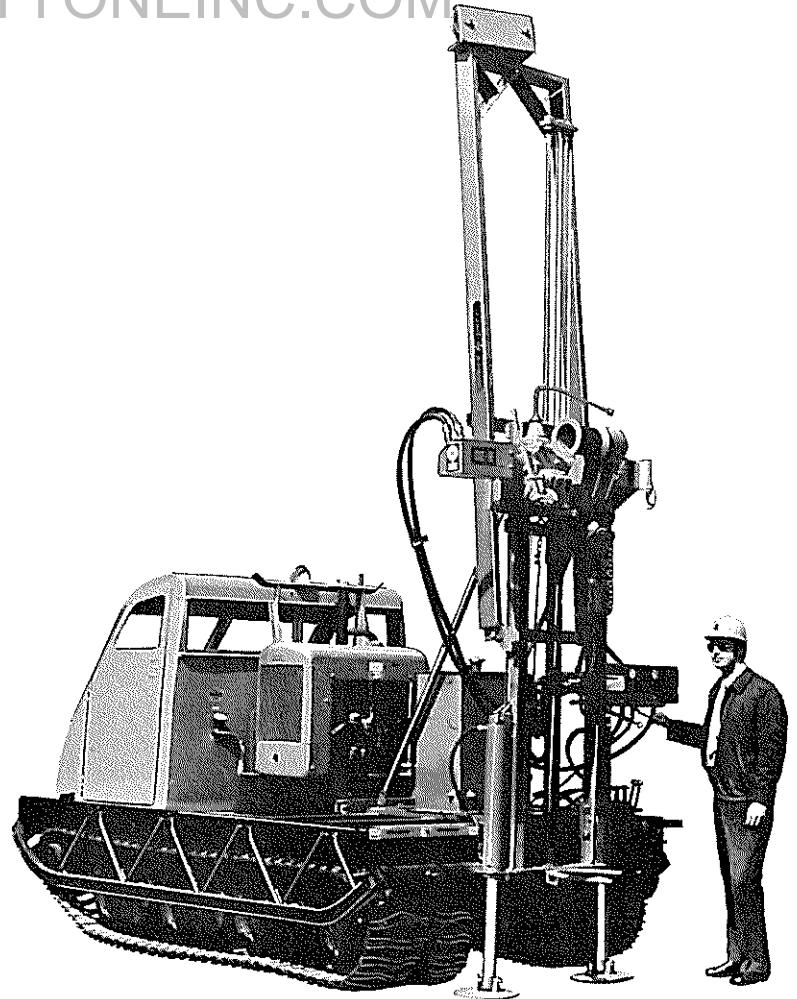


The Carrier may be equipped with a rear deck, particularly useful for freighting supplies, setting up camps, and construction work in off-road projects.

These vehicles carry hydraulic equipment into difficult-to-reach areas. For instance, a soil test drill or a drilling rig for test-hole drilling in oil, gas and mining operations.



Muskeg Carriers are renowned for their ability to operate efficiently in difficult terrain. The new Carrier diesel (above) forges through spongy muskeg, where its watertight features really pay off. The Carrier Gas (below) demonstrates the flexibility of the Bombardier tracks over ground littered with obstacles.





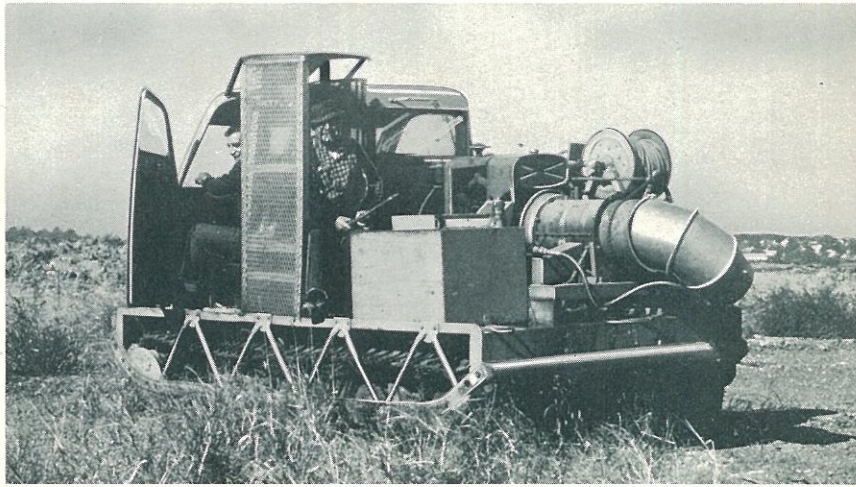
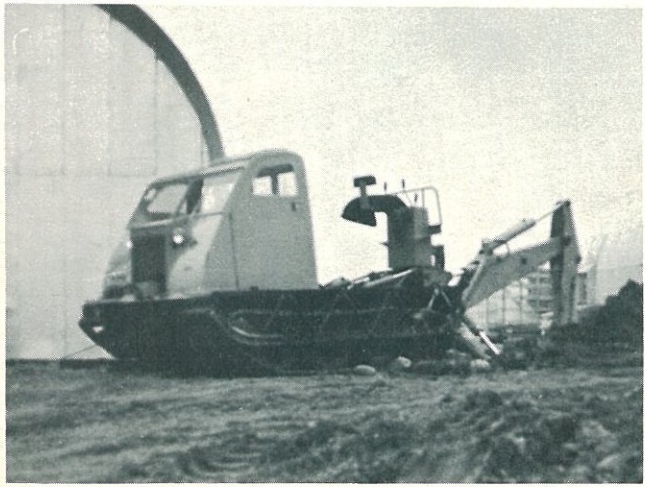
WWW.SAFETYONEINC.COM

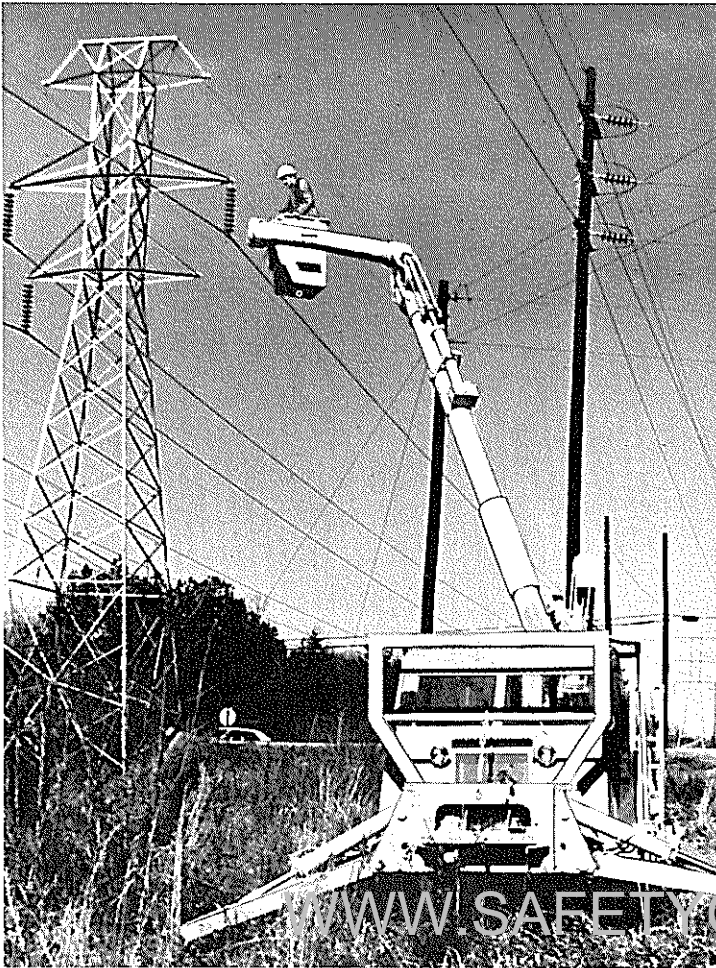
Electrical and telephone companies and contractors use the Carrier with rear-mounted auger/derrick combination for installing utility poles.



A backhoe for drainage-ditch digging and other types of excavations in swampy land. Also constructing pipelines, sewers and water mains.

Blowers and sprays are used for pest control, and for seeding and fertilizing in agricultural operations.

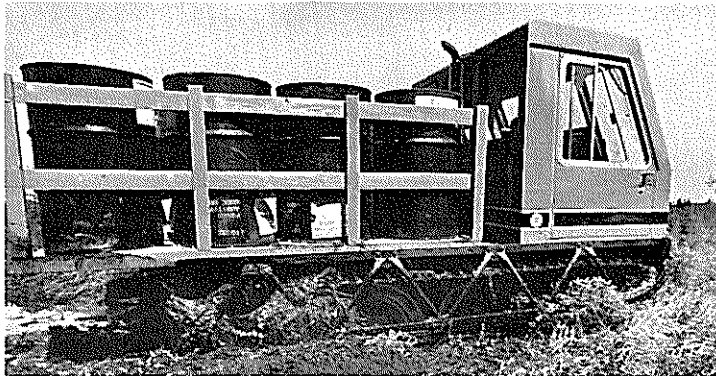




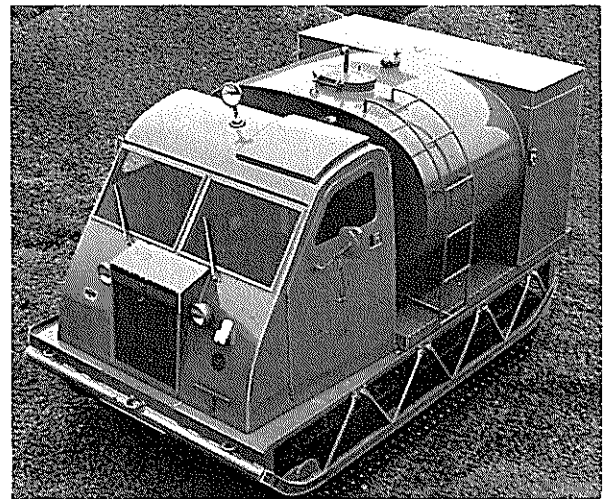
In combination with an aerial bucket, the Carrier is used for power and telephone line maintenance and inspection as well as for tree-trimming on soggy rights-of way.



Power line stringing is yet another function of the versatile Muskeg Carrier from Bombardier.



As a general transporter it carries up to 8,000 lbs. of payload.



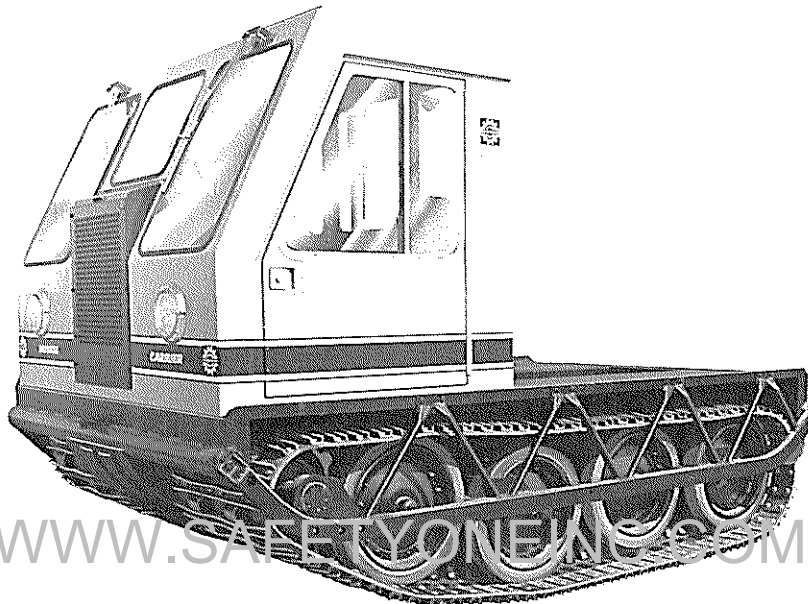
As a tanker the Carrier transports water and fuel for general operations, particularly in ecologically sensitive areas. Water tanks are also used for fire fighting in forestry operations.



**Bombardier tracked vehicles go where others fear to tread.**



**MUSKEG®**  
**CARRIER**



WWW.SAFETYONEINC.COM

**An innovative company  
WITH A GOOD TRACK RECORD**

# Specifications

## DIMENSIONS

	S.I.	
Overall Length	3,62 m	142 1/2"
Overall Width	2,24 m	88"
Overall Height	2,32 m	91 1/2"
Ground Clearance	36 cm	14"
Frame Height	81 cm	32"
Curb Weight (Basic Vehicle)	3 600 kg	7 920 lb

## OPERATIONAL

Load Capacity	3 629 kg	8 000 lb
Maximum Speed	16 km/h	10 MPH
Fording Depth	76 cm	30"
Inside Turning Radius	3,66 m	12'
Basic Vehicle:		
Ground Pressure at 0"	11,17 kPa	1.62 PSI
Ground Pressure at 6"	9,38 kPa	1.36 PSI
G.V.W.:		
Ground Pressure at 0"	22,48 kPa	3.26 PSI
Ground Pressure at 6"	18,82 kPa	2.73 PSI

Maximum Gradeability:  
(static test when loaded)

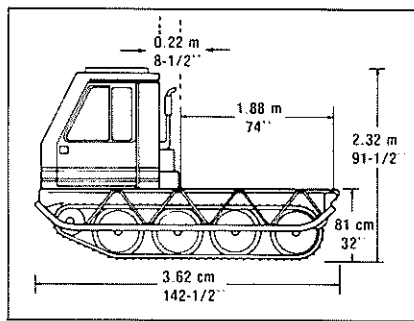
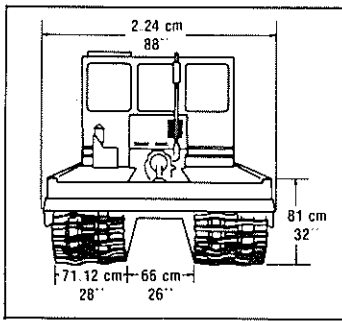
Sidehill	Up to 40%
Uphill	Up to 50%

## ENGINE

Make	Perkins
Model	4.236
Type	Diesel
No. of Cylinders	4
Displacement	3,87 l (236 cu in)
Horsepower-brake	78 HP @ 2500 RPM
Maximum RPM	2500
Torque	268 N•m (198 lbs•ft) @ 1400 RPM

## POWER TRAIN

Transmission - Make	New Process Gear
- Type	Manual, 5 speed
- Model	542-L1
- Ratios	1st - 7.24 to 1
	2nd - 4.33 to 1
	3rd - 2.61 to 1
	4th - 1.59 to 1
	5th - 1.00 to 1
	Reverse - 7.22 to 1
Clutch	Dry, single disc 33 cm (13") dia.



**MUSKEG®**

**Bombardier Inc.**  
Industrial Equipment Division

Valcourt, Que., Canada, JOE 2LO  
Telephone (514) 532-2211  
Cable Bombarsnow, Telex 05-832575

**Speed Reducer or Transfer Case**

- Ratio 1.56 to 1
- Differential Planetary-controlled
- Ratio 3.9 to 1

- Final Drives - Ratio 1.61 to 1

- Drive Sprockets - Type Rubber and fabric
- Location Front

- Brakes - Service Disc brake on drive line
- Parking Simultaneous pulling of steering levers
- Locking device on drive line brake

**STEERING**

Track-steered through the controlled differential. Steering levers operate brake bands on the differential steering brake drums.

**ELECTRICAL**

- Voltage 12 volts
- Battery Capacity at 0°F (CCA) 630 amp
- Alternator Capacity 61 amp
- Ground Negative

**SUSPENSION**

Wheels mounted in tandem.

**WHEELS**

- Quantity 16
- Type of tires 4 rear solid, balance pneumatic or solid.
- Size 4.50 X 16
- Pneumatic Tires are of nylon fabric construction of 6 ply rating.

**TRACKS**

- Type Rubber belts with steel crosslinks
- Width 71.12 cm (28 inches)
- Type of belts Rubber and fabric
- Width of belts 13.97 cm (5 1/2 inches)

**CHASSIS**

- Type Toboggan, watertight

**CAB**

Choice of 1-man, 2-man or 6-man cab with escape hatch above driver's seat

- Safety belts
- Heater-defroster
- Windshield wipers
- Dual front lights
- One rear light
- One dome light

**CAPACITIES**

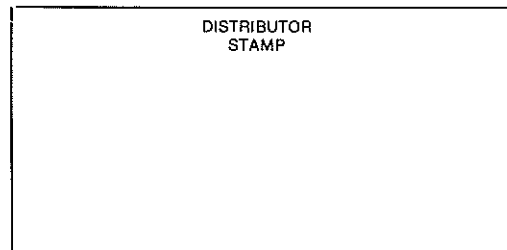
	S.I.	U.S.	Imp.
Cooling System	25 l	6.6 gal	5.5 gal
Fuel tank			
- 1 man cab	86 l	22.8 gal	19 gal
- 2 man and 6 man cab	104,5 l	27.6 gal	23 gal
Engine Crankcase	10,22 l	10.8 qt	9 qt
Transmission	5,88 l	6 qt	5 qt
Differential	27,25 l	7.2 gal	6 gal
Speed Reducer	1,42 l	1.5 qt	1.25 qt
Transfer Case	4,2 l	4.4 qt	3.7 qt

**STANDARD EQUIPMENT**

- Air Cleaner - Type Dry
- Antifreeze Up to -37°C (-35°F)
- Fan - Type Pusher
- Instruments Ammeter
- Engine temperature gauge
- Fuel gauge
- Engine oil pressure warning light
- Hourmeter
- Lap
- Seat Belt - Type 2 front, 1 rear, 1 dome
- Lighting system

**OPTIONAL EQUIPMENT**

- Wheels with mechanical seals
- Power steering
- Engine block heater (600 W)
- Pintle hook (front or rear)
- Front or rear winch: 20 000 lb
- Cold start device
- Additional fuel tank
- Radiator shutters
- All wheels with solid tires
- Tachometer



The specifications given are for a basic vehicle and tested under ideal conditions. The manufacturer reserves the right to change specifications without notice.

Bombardier Inc.  
Industrial Equipment Division  
Valcourt, Québec, Canada JOE 2LO  
\* Trade Mark of Bombardier Inc.  
Telex: 05-832575