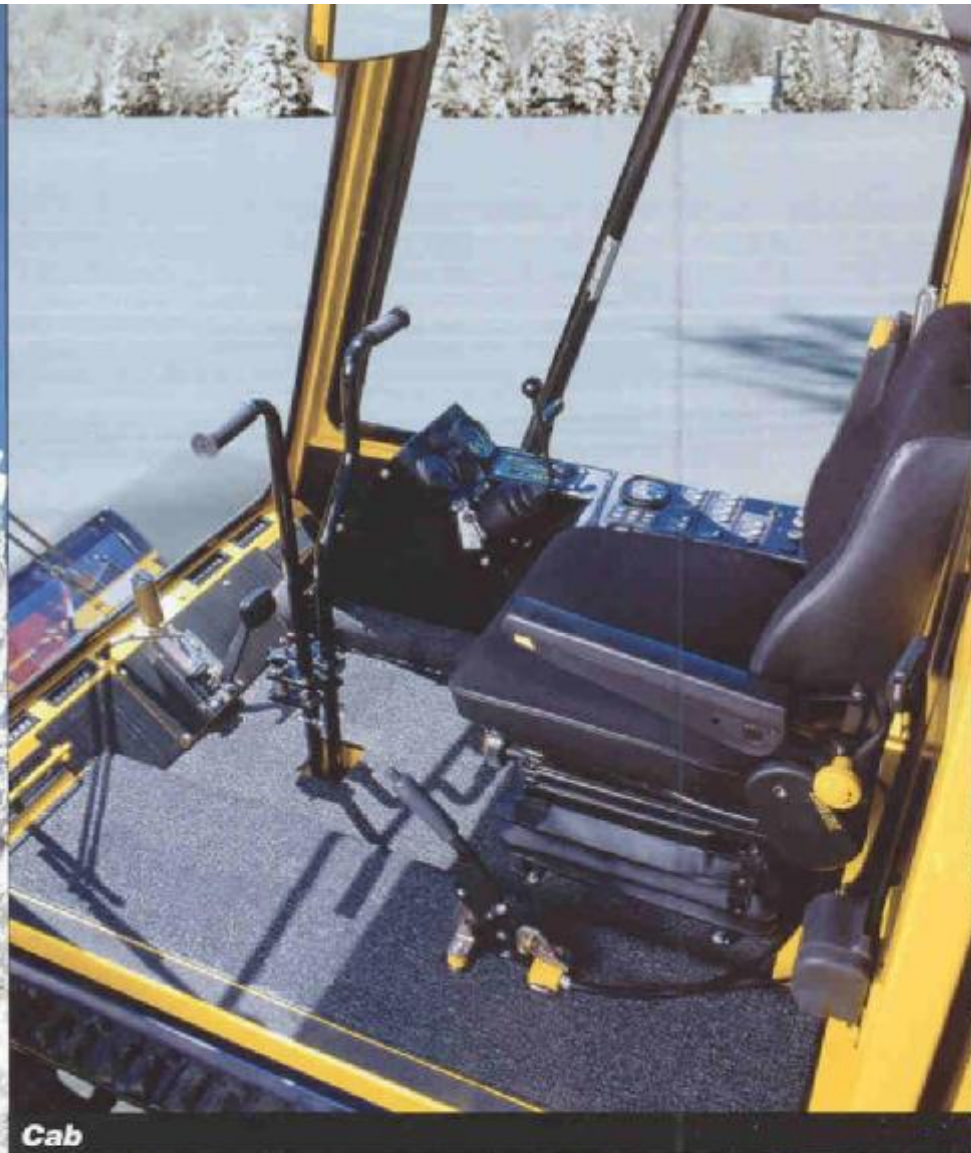


SW 48



SW 48

High Speed Sidewalk
Snowplow



Cab

Ergonomic design with low noise levels and excellent all around visibility. Built to R.O.P.S. standards for operator safety and comfort.



Accessibility

Designed for ease of maintenance with tilting cab and large rear access panels.



Sand and Salt Spreader

The sand and salt spreader is hydraulically driven with a capacity of, 0.28 m³ (.50 yd³), to keep sidewalks safe in the worst of conditions.



Tracks

Available with steel crosslinks, rubber covered steel or endless molded tracks.

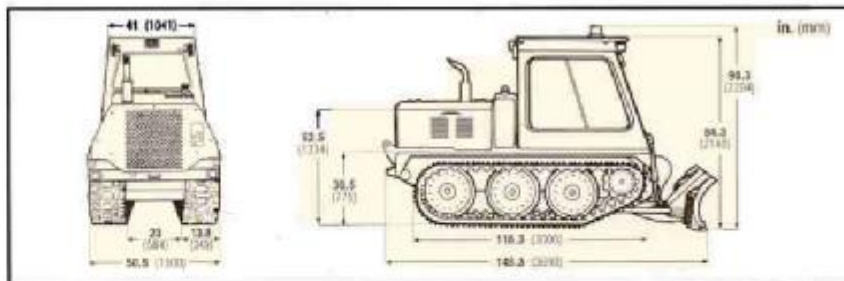


Blades

Available with V Plow or straight blade with hydraulic angling. The straight blade features a heavy duty tipping cutting edge, which allows blade down pressure for clearing tough ice and snow.



SW48



ENGINE

Make	Perkins	
Model	1004-42	
No of Cylinders	4	
Displacement	236 cu. in.	3.9 L
Horsepower @ 2400 rpm	81.5 HP	61 kW
Torque @ 1400 rpm	213 lbs. ft.	290 N.m

POWER TRAIN

Transmission	Ford Automatic C-6	
- Make	Ford	
- Type	Automatic	
- Model	C-6	
Differential	Planetary control	
Drive sprockets	Rubber and fabric	
- Type	Rubber and fabric	
- Location	Front	
Brake	Hydraulic disc on drive line	
- Service	Hydraulic disc on drive line	
- Parking	Mechanical disc on drive line	

STEERING

Manual, operation through controlled differential

CHASSIS

Type Toboggan, welded

SUSPENSION

Front wheels on torsion trailing lever
Rear wheels on walking beam

WHEELS

Quantity	6
Type of tire	Solid
Size	4.5 in. x 16 in. (114 mm x 406 mm)

TRACKS

Type	Endless rubber tracks with steel wire reinforcement
Width	13.75 in. (350 mm)

ELECTRICAL

Voltage	12 volts
Battery Capacity	750 CCA
Alternator Capacity	106 amps

DIMENSIONS

Overall Width	50.5 (1300)
- without blade	
Overall Length	145.3 (3690)
- with blade	
Overall Height	90.3 (2294)
Ground Clearance	8.5 (214)
Frame Height	30.5 (775)

Shipping Weight	5150 lbs. (2336 kg)	
- Vehicle without blade	5150 lbs. (2336 kg)	
Shipping weight	5600 lbs. (2540 kg)	
- Vehicle with blade	5600 lbs. (2540 kg)	

HYDRAULIC SYSTEM

Pump Flow	5.1 US GPM @ 1200 rpm
	19.2 L/min
Relief Valve Setting	1300 PSI

CAPACITIES

	U.S. gallons	Liters
Engine Cooling system	6.6	25.0
Fuel tank	40.0	152.0
Engine Oil Pan	2.5	9.4
Transmission	2.4	9.0
Differential	4.8	18.0
Hydraulic Tank	10.0	38.0
Windshield washer tank	1.1	4.0

PERFORMANCE

Maximum Speed	19 mph	30 km/h
Inside Turning Radius	12 ft.	3.7 m
Ground pressure	2.9 Psi	203 g/cm ²
Maximum Gradeability: (static test when loaded)		
- Uphill	Up to 55 %	
- Sidehill	Up to 35 %	

CAB

1 person, insulated cab with electric power lift and integrated roll over protective structure (ROPS) complying with SAE J1040
Three point safety belt
Adjustable suspension seat
Heater / defroster with fresh air intake
Windshield wiper and washer
Intermittent windshield wiper
Dome light and dash lights
Front (halogen) lights

CAB (continued)

1 rear light
2 stop and tail lights
Parking brake light
Directional signal lights
Roof strobe light

STANDARD EQUIPMENT

Engine block heater 600 W
Air Cleaner - Type Dry
Anti - freeze Up to -35°F (-37°C)
Back-up alarm
Oil cooler for differential with temperature indicator and filter
Instruments:
Hourmeter
Fuel gauge
Oil pressure gauge
Temperature gauge
Voltmeter
Fuel level indicator
Warning lights:
Engine oil temperature
Engine oil pressure
Transmission oil temperature
Parking brake
High beam light
Alternator charge capacity
Warning buzzers:
Engine temperature
Engine oil pressure
Transmission oil temperature
Blade push frame

OPTIONAL EQUIPMENT

Cab
Special color
Radio with speakers
Rear windshield wiper
Rear windshield defroster with visual indicator
Headlight protector
Strobe light protector
Transmission oil temperature indicator
Speedometer

Tracks
With rubber covered steel crosslinks
With steel crosslinks

	Width
Narrow	58 in. (1470 mm)
Wide	70 in. (1770 mm)
V plow	48 in. (1200 mm)

Miscellaneous
Additional rear hydraulics
Sand spreader

Vehicle shown with optional equipment. The specifications for a basic vehicle are given on the basis of adequate skills and ability of operator (as indicated in Operator's Guide) and under ideal snow conditions. The manufacturer reserves the right to change or discontinue any specifications, design, features, model or accessories shown or instructed without notice. * Trade Mark of Bombardier Inc. © Copyright Bombardier Inc. 10/2001

Bombardier

1001 J.-A. Bombardier Street
Granby, Quebec, Canada J2J 1E9
Telephone 1(450) 776-3600
Fax 1(450) 776-3625
<http://www.recreation.bombardier.com>

